


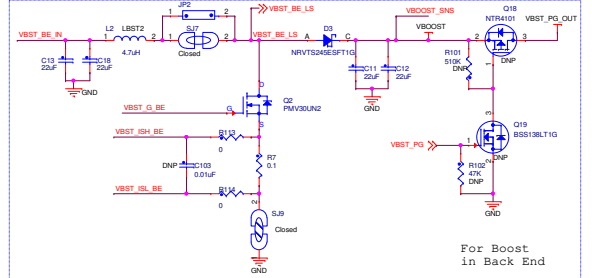
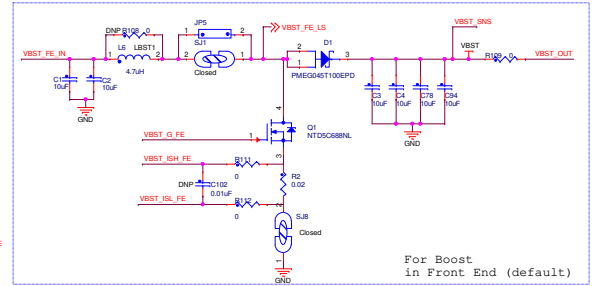
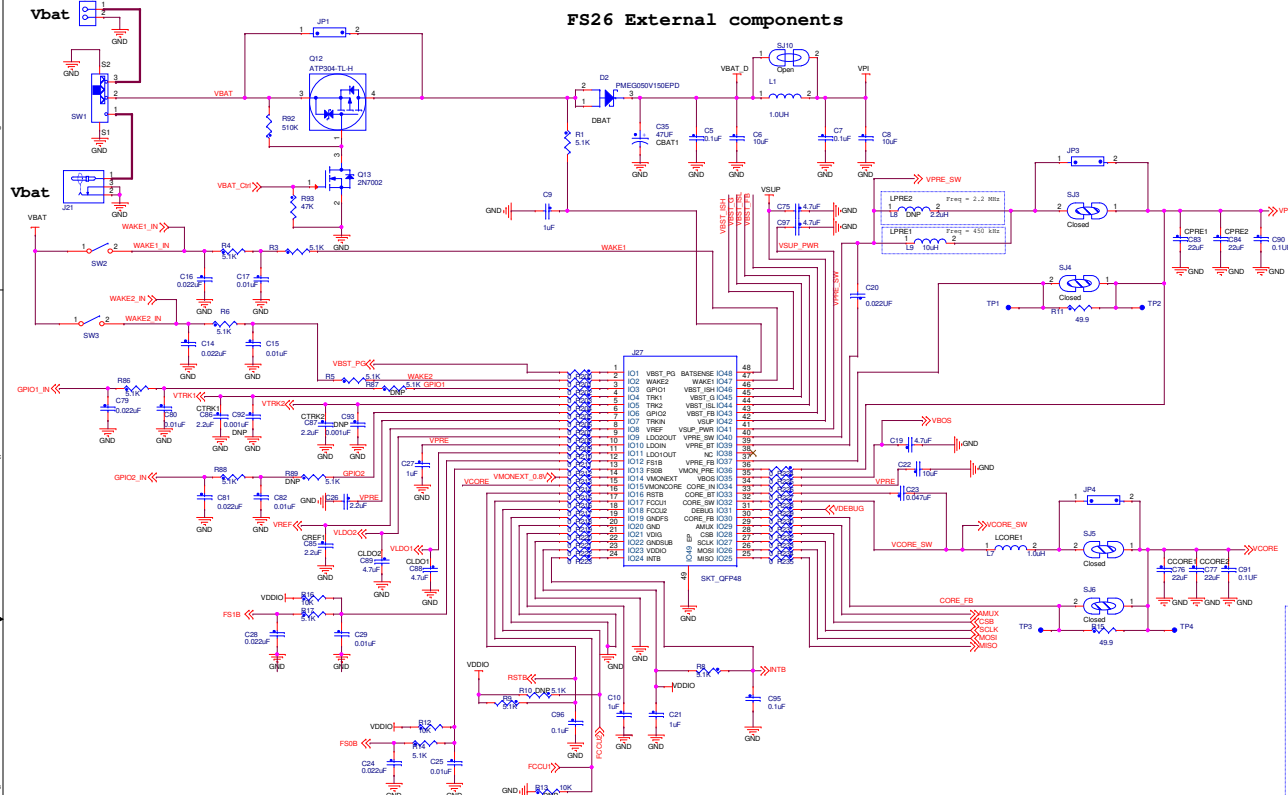
Table of Contents	
02	FS2630 SYSTEM
03	JUMPERS / CONNECTORS
04	MCU INTERFACE
05	SW/DNP/JUMPER TABLES

Revisions			
Rev	Description	Date	Approved
X1	Preliminary Release	24 Jan 20	I. Estrada
X2	A070 Release	12 Feb 20	I. Estrada
A	Final Release	02 Apr 20	I. Estrada
AX1	Several improvements	18 Jun 20	I. Estrada
AX2	Using the socket: IC500-0484-017	19 Jun 20	I. Estrada
B	Final release	01 July 20	I. Estrada
BX1	Using the socket: NP584-048-113	07 Aug 20	I. Estrada
C	Final release	02 Sep 20	I. Estrada

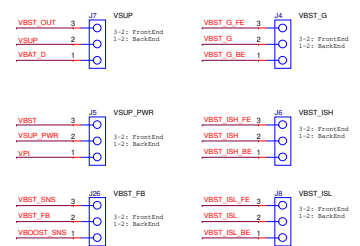
# KITFS26SKTEVM

		<b>Analog Sensor Product Group</b> 8501 Williams Cannon Drive West Austin, TX 78725-8598	
<small>This document contains information proprietary to NXP and shall not be used for engineering design, procurement or manufacture in whole or in part without the express written permission of NXP Semiconductors.</small>			
<b>NXP SEMICONDUCTORS</b>		Classification: <u>Company Internal/Proprietary</u>	
Designer: Irene Estrada	Drawing Title: <b>KITFS26SKTEVM</b>		
Drawn by: Diego Garay	Page Title: <b>TITLE &amp; REV</b>		
Approved: Irene Estrada	Size: C	Document Number: SCH-46813 PDF: SPF-46813	Rev: C
Date: Wednesday, September 02, 2020		Sheet 1 of 5	

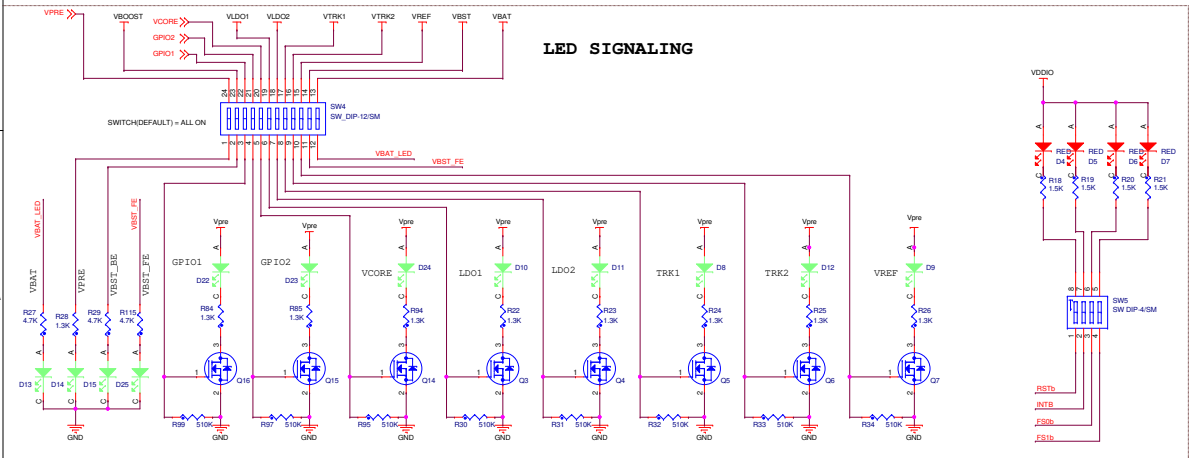
### FS26 External components



### BOOST FRONT END/BACK END CONFIGURATION



### LED SIGNALING

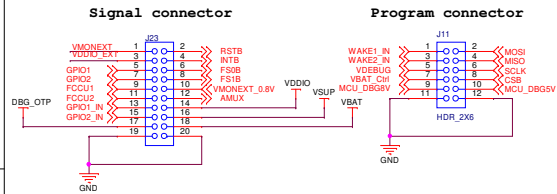


**NXP**

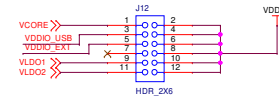
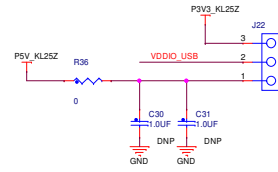
Classification: Customer Internal/Confidential  
 Drawing Title: **KITFS26SKTEVM**  
 Page Title: **FS2630 SYSTEM**

Size A2	Document Number	IG04-48913 PDF: 69F-48913	Rev C
Date:	Wednesday, September 16, 2020	Sheet 2	of 5

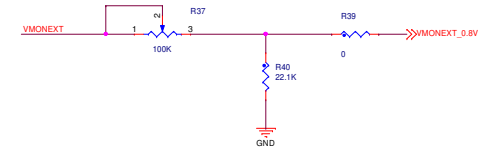
## SIGNALS



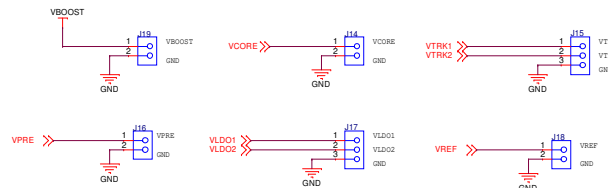
## VDDIO SELECTION



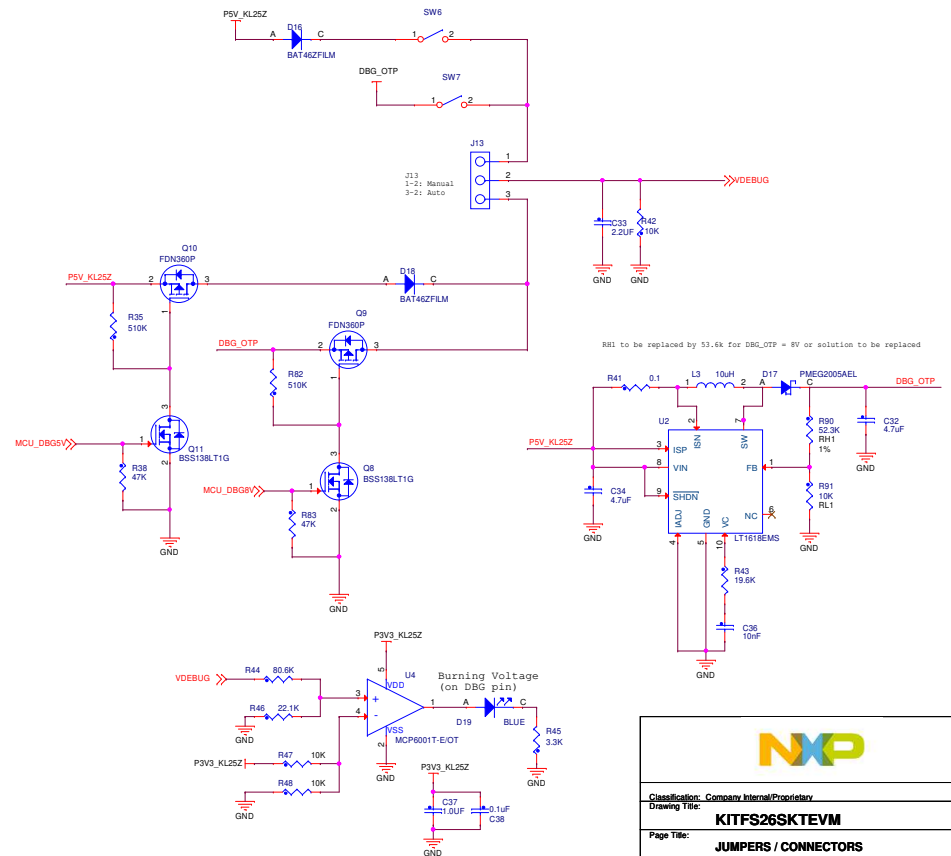
## VMONEXT CONFIGURATION



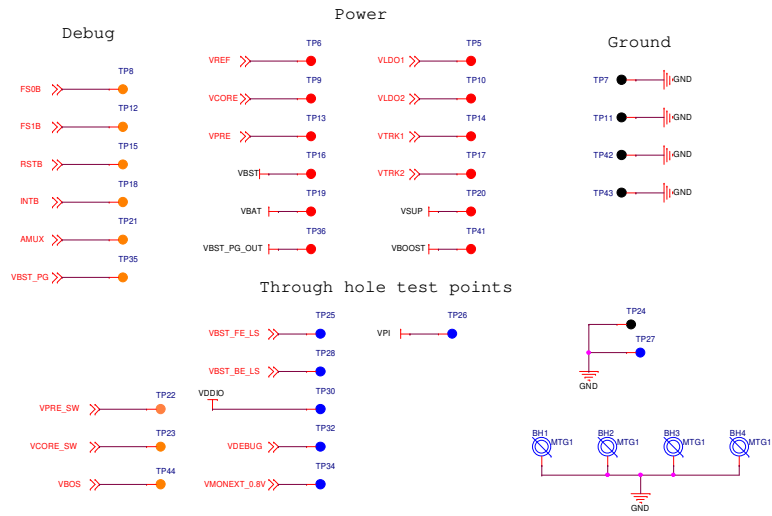
## POWER OUTPUTS



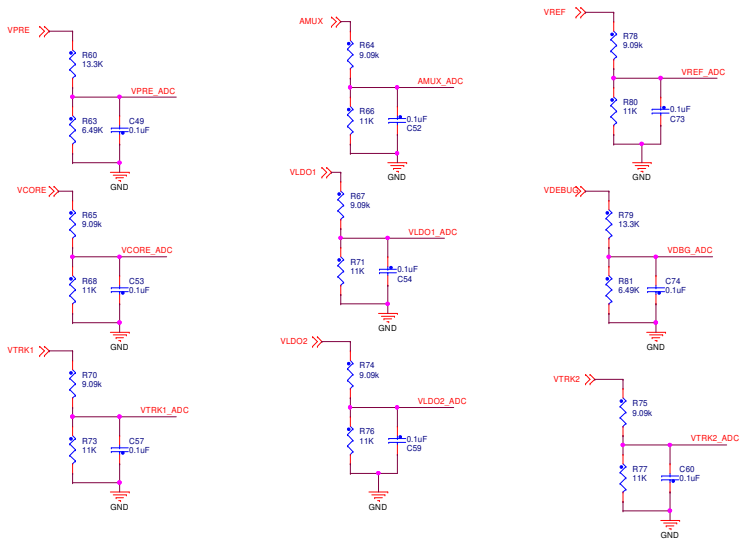
## DEBUG & PROG VOLTAGE



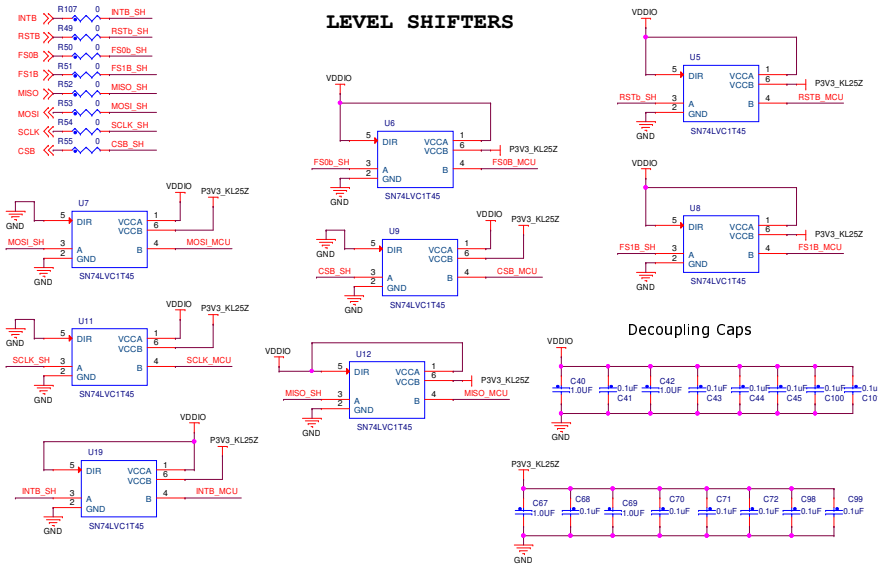
## TEST POINTS



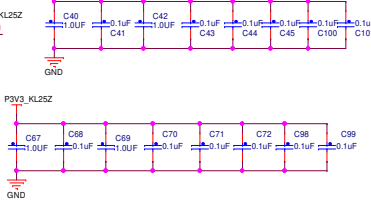
### ANALOG INPUTS



### LEVEL SHIFTERS

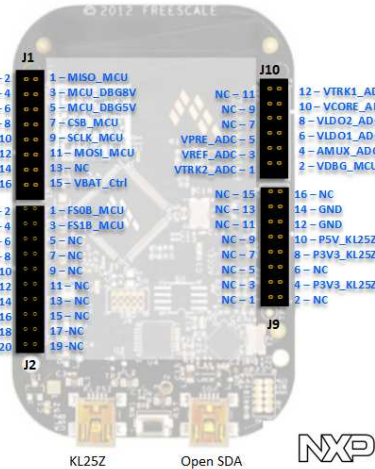
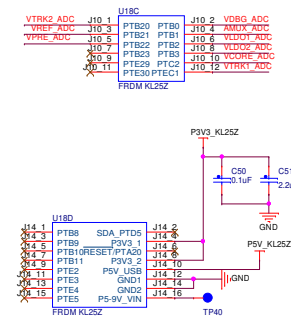
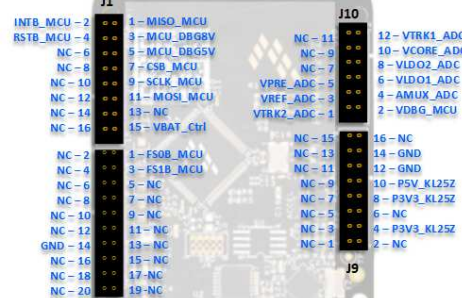
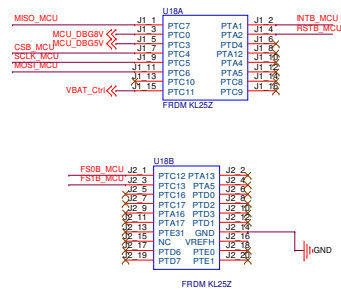


### Decoupling Caps



## KL25Z Freedom

### FRDM KL25Z – KITFS26AEEVM pinout



KL25Z Open SDA NXP

**NXP**

Classification: Company Internal/Proprietary

Drawing Title: **KITFS26SKTEVM**

Page Title: **MCU INTERFACE**

Size C Document Number SCH-46813 PDF: SPF-46813 Rev C

Date: Wednesday, September 02, 2020 Sheet 4 of 5

REF DES	JUMPER(DEFAULT)	JUMPER(OPTION1)	JUMPER(OPTION2)	PAGE NAME
J5,J6,J8,J7,J26,J4	3-2	1-2		02 FS2630 SYSTEM
JP2,J3,JP5,JP4,JP3	OFF	ON		02 FS2630 SYSTEM
J25,JP1	ON	OFF		02 FS2630 SYSTEM
J13	1-2	2-3		03 JUMPERS / CONNECTORS
J22	3-2	1-2		03 JUMPERS / CONNECTORS
J12	3-4	5-6	1-2, 9-10, 11-12	03 JUMPERS / CONNECTORS

REF DES	ASSY_OPT	PAGE NAME
C92,R10,Q18,R87,Q19,R108, C103,C102,L8,R102,R13,C93, R89,R101	DNP	02 FS2630 SYSTEM
C30,C31	DNP	03 JUMPERS / CONNECTORS

REF DES	SWITCH(DEFAULT)	SWITCH(OPTION1)	SWITCH(OPTION2)	PAGE NAME
SW1	2	3	1	02 FS2630 SYSTEM
SW4,SW5	ALL ON			02 FS2630 SYSTEM
SW2,SW3	OFF	ON		02 FS2630 SYSTEM
SW6,SW7	OFF	ON		03 JUMPERS / CONNECTORS

REF DES	SHORT(DEFAULT)	PAGE NAME
SJ7,SJ4,SJ9,SJ3,SJ8,SJ6,SJ5, SJ1	Closed	02 FS2630 SYSTEM
SJ10	Open	02 FS2630 SYSTEM



Classification: Company Internal/Proprietary

Drawing Title:

**KITFS26SKTEVM**

Page Title:

**SW/SHORT/DNP/JUMPER TABLES**

Size  
A

Document Number

SCH-46813 PDF: SPF-46813

Rev  
C

Date: Wednesday, September 02, 2020 Sheet 5 of 5